



**PT DUNGGIO DRILLING
DRILLING CONTRACTOR**

Safety for us & Environment for the future

DRILLING PROJECT MANAGEMENT & RIG SERVICES



COMPANY PROFILE

Your Trusted Business Partner

TABLE OF CONTENT

Vission and Mission	1
DD Core Value	2
DD is your Trusted Business Partner	3
Company History & Milestone	4
Organization Chart	6
Healthy, Safety & Environment	8
Rig & Machine Inventory List	9
Rig DDJC175	10
Rig DDJC250	11
Rig DD-JC500	12
Rig Tractor Mounted DD-JC500	14
Rig DDLY38	15
Rig DDLY44	17
RIG UDR1600D (351 HP)	19
Support Equipment	21
Company Experience	22
DD Drilling Projects	25





VISION & MISSION

VISI COMPANY VISION **PERUSAHAAN**

PT. Dunggio Drilling bertekad menjadi simbol kontraktor pengeboran terbaik diregional

PT Dunggio Drilling determines to be the symbol of Excellence Drilling Contractor in Regional.



MISI COMPANY MISSION **PERUSAHAAN**

Memberikan jasa pengeboran yang berkualitas dan efisien dengan harga kompetitif, didukung teknologi mesin bor yang dimodifikasi dengan baik serta mengutamakan keselamatan dan keselamatan kerja pada setiap aktivitasnya.

Provide quality and efficient Drilling Service with Competitive Price, integrate with good modified drilling technology machine and also value health & Safety in all we do.

D2 CORE VALUE

- D** Develop Always develop mutually beneficial partnership with client, employee & Society
- U** Upholding High Health & Safety Standard Upholding high health & safety standard in all company operation
- N** New Technology Modification Always looking & deliver for new technology in innovative ways to meet client expencatation
- G** Growing Growing together with client, supplier, employee and society
- G** Good Good Core Recovery and Drilling result
- I** Integrity With interity, we value openness and honesty in all our operation activities
- O** On time On time in delivering project target timeline to client



Dunggio Drilling is Your Trusted Business Partner

DUNGGIO DRILLING was established in 2004 by Good Dunggio in the field of Drilling services to drill for Coal and Mineral. Currently expanding its business into Oil & Gas and Geothermal drilling services.

We provide Drilling Project Management and Rig Services focussing on client satisfaction with a diverse proven Land Drilling Rig Fleet managed by highly trained and experience staff, with an exceptional work safety record and high QHSE Standard.

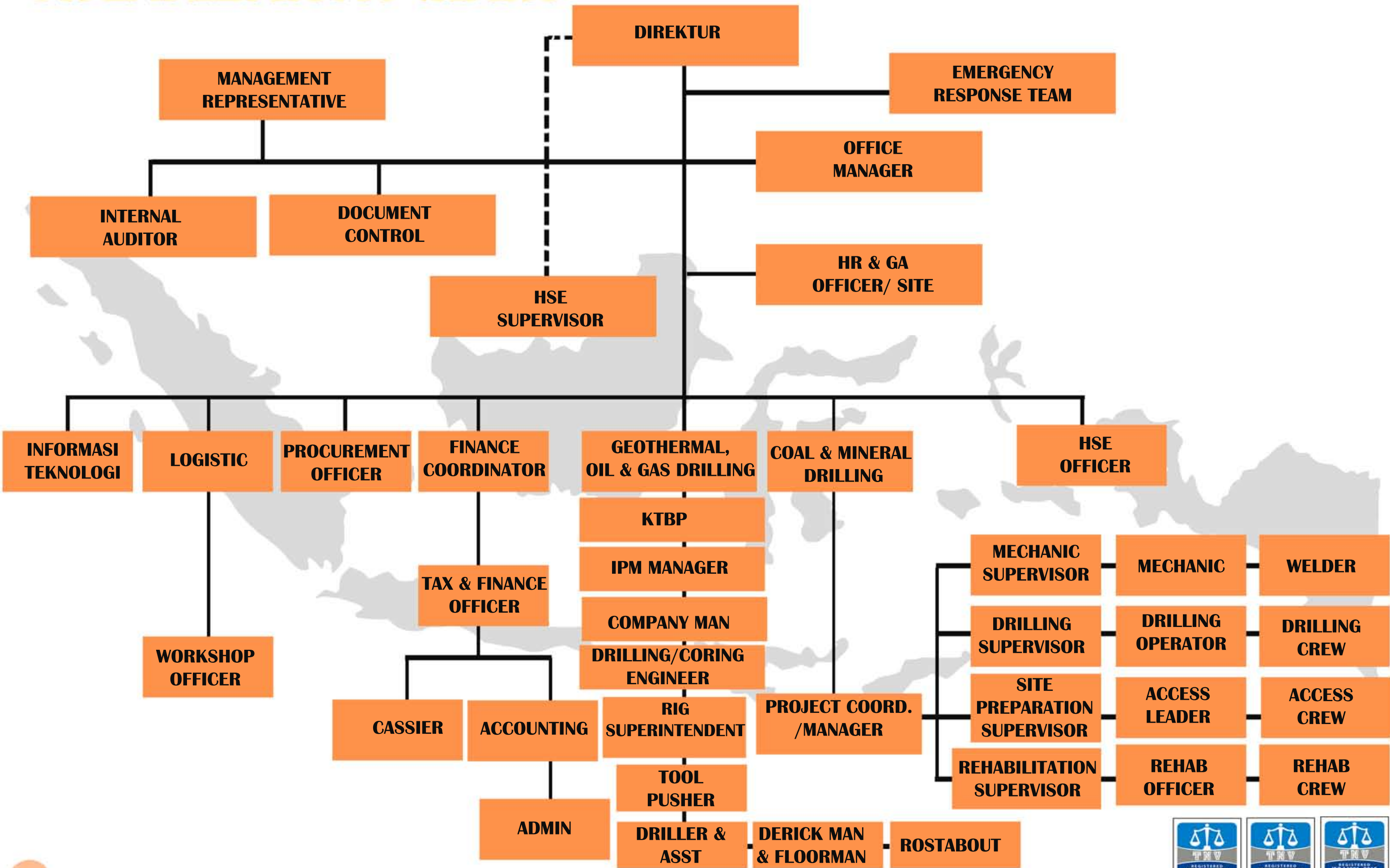


COMPANY HISTORY & MILESTONE

Founded in 2004, Dunggio Drilling focus on Land Rig Drilling services for Coal & Mineral Drilling and currently expanding capabilities and services into Oil & Gas and Geothermal



ORGANIZATION CHART



Healthy, Safety & Environment

DUNGGIO DRILLING is committed to improve quality, safety and occupational health in accordance with Standard Integration of

- The International Quality Management ISO 9001:2015
- The International Occupational Health and Work Safety Standard Management ISO 45001:2018
- The International Environmental Management System ISO 14001:2015



ISO 9001: 2015



ISO 45001: 2018



ISO 14001:2018

The Company applied these QHSE International Standard with the aim to prevent things that are harmful to health, or injury to employees, and detrimental impact on the environmental pollution in the entire operation of PT Dunggio Drilling to exceed Customer expectation.

To achieve that goal, management and staff have a leadership function in the communication and implementation to ensure compliance with QHSE policies standards.

SPECIFICATION DDJC175

A Man Portable Rig. This unit can drill up to PQ Coring 10meter, HQ Open Hole 120 meter (Single tube), HQ Coring up to 100meter (triple tube).

SYSTEM :

- Full hyd. System
- Hyd. Top drive
- Skid Mounted with knock down assembly
- Pull up/Down by Chain RS80, driven by hyd. Motor.



SPECIFICATION :

- Driven by Vanguard petrol engine 31 hp
- Rotary speed 250 rpm up to 500 rpm
- Oil capacity 40 Liter of Hyd. Tank
- Complete Hyd. Hose with quick join coupling



SPECIFICATION DDJC250

The standard type can drill up to PQ 60m, HQ 100m, NQ 150m and modified type can drill up to PQ 100m, HQ 150m, NQ 200m.



SPESIFICATION :

- 1) Non Winching, but Man Portable**
- 2) Rotary speed up to 600 rpm (low and high gear box)**
- 3) Dry Weight Engine (Exclude Prime) 250 kg.**

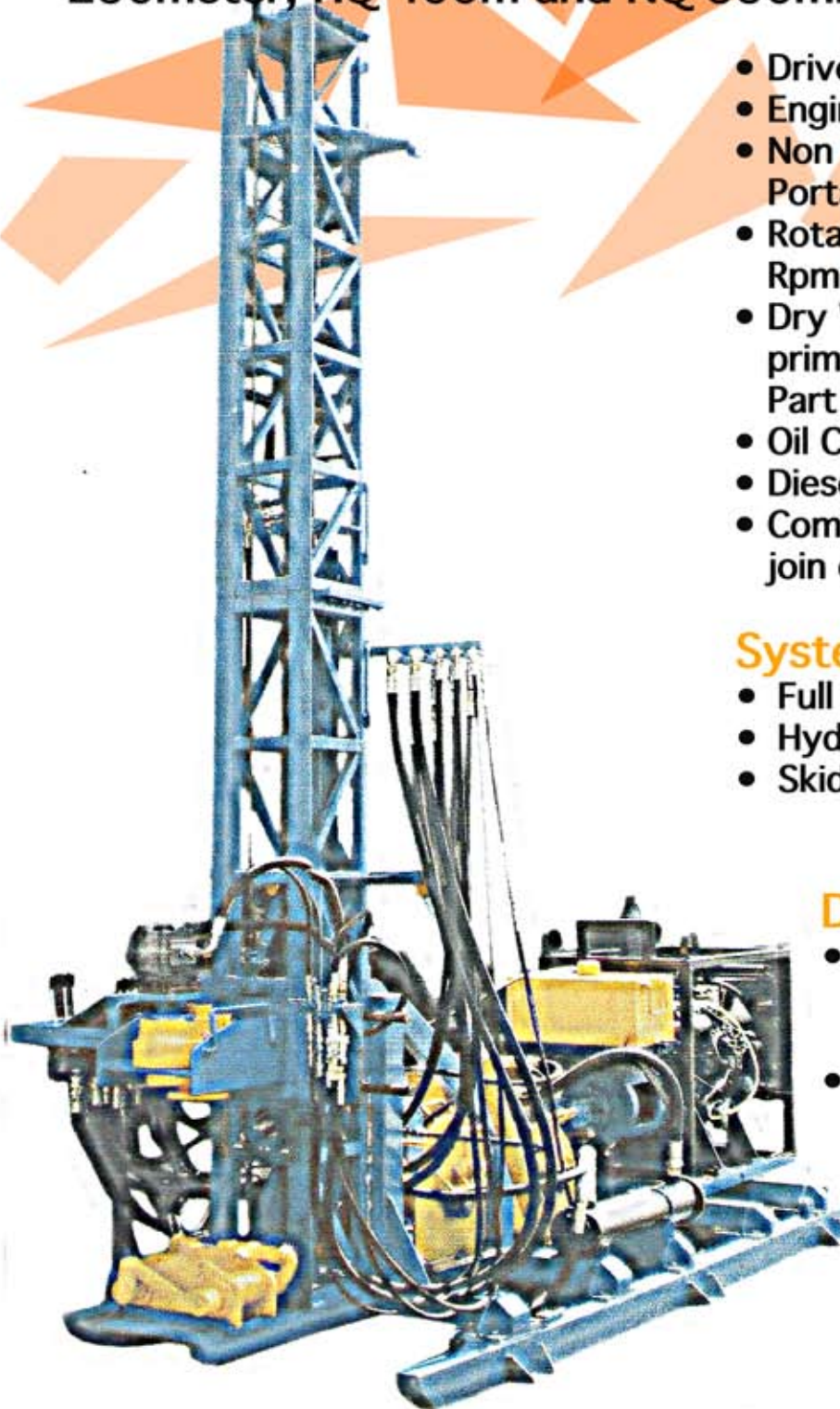
The heaviest part in this rig.

- 4) Oil capacity 100 Liter of Hyd. Tank**
- 5) Diesel Fuel Tank Capacity 30 liter**
- 6) Complete Hyd. Hose with quick Join Coupling**
- 7) FMC 535 Mud Pump, variable speed (No V-belt)**
- 8) Wireline system powered by Kubota 4-Cylinder:**
 - 40 HP / 3000 rpm (standard type) and**
 - 60 HP / 3000 rpm (modified).**

SPECIFICATION DDJC500

Wireline system powered by Kubota 4-Cylinder 97 HP (Turbo Charger)/ 2600 rpm.

*Standard Rig can drill up to PQ 150 meter, HQ 300 meter, NQ 450 meter, while *Modified Rig can drill up to PQ 250meter, HQ 400m and NQ 550m.



- Driven by Kubota Diesel
- Engine 97 hp (Turbo)
- Non Winching, but Man Portable
- Rotary Speed up to 900 Rpm (High/Low Transmission)
- Dry Weight Engine (exclude prime) 350 kg. The heaviest Part in this rig
- Oil Capacity 100 ltr of Hyd. Tank
- Diesel Fuel Tank Capacity 50 Liter
- Completed Hyd. Hose with quick join coupling

Systems :

- Full hyd. System
- Hyd. Top drive
- Skid Mounted

Dimension :

- Length x Width x Height : 3.40m x 1.50m x 165m (without mast)
- Weight : 2500kg

SPECIFICATION DDJC500

NO.	DETAILS	WEIGHT
1.	Engine Kubota V 3300	529 kg
2.	Chasis, Hyd. Hose , Control bank, Drum Wireline	795 kg
3.	Bottom Mast	734 kg
4.	Top Mast	175 kg
5.	Gear Box , Water swivel	144 kg
6.	Fuel Tank	70 kg
7.	Skid Base	238 kg
8.	Support Mast	47 kg
9.	Foot clamp	54 kg

1. UNIT POWER SUPPLY (NON ENGINE DIESEL)

- Hydraulic power by Gear pump 70 + 16 ltr/minute (for rotary, and for up/down) max pressure 3000 psi/210 bar
- Hydraulic oil tank : 80 Litre
- Diesel Fuel tank : 30 Litre

2. UNIT CONTROL DEVICE

- Hand control valve 3Bank 3/4" Monoblock Branded Integral by Italy HDM 20-3D/ d5 (for hydraulic Rotation, Hydraulic Winch and Hydraulic Wireline)
- Hand control Valve 5bank 1/2" Monoblock branded Integral by Italy HDM 18-50 1/2" (for hydraulic Up down, Hydraulic lift mash, Hydraulic sliding, hydraulic Jack Mash and Clamp Chuck Assy)
- Relief Valve : For adjustment pressure up/down RV2-1/2 max, pressure 3000 psi
- Regulator Valve : For adjustment pressure flow up/down integral FRV 2-1/2"
- Brake Valve : For adjustment brake winch and wireline, branded integral Italy CBV2-1/2" 0-3000 psi
- Pressure Gauge : By skon USA 0-250 psi

3. UNIT POWER DEVICE

ROTARY HEAD MOTOR DDJC500 5(RH 1/2") 4000 Series 109-1116-006 Eaton USA

- Speed Power : 0-1200 rpm
- Power Pressure : 0-3000 psi
- Speed Rotary : 700 -1500 rpm

UP/DOWN CYLINDER HYDRAULIC DDJC500 5CH Dia 85x100x50xStroke 1650mm

- Torsi Capacity : 915MM (66641 lb/in)
- Speed Power : 1000MM/10 Second
- In/out prot : 1/2" SAI O-ring

WIRELINE HYDRAULIC MOTOR DDJC550 5(RH 2/2) 2000 series 104-1228-0006 ETN USA

- Torsi Capacity : 452NMC (3961 lb/in)
- Speed Power : 0-250 Rpm
- In/out prot : 1/2" SAI O-ring

WINCH HYDRAULIC MOTOR DDJC500 5(RH 2/2) 4000 Series 109-1215-006 ETN. USA

- Torsi Capacity : 452NMC (3961 lb/in)
- Speed Power : 0-250 Rpm
- In/out prot : 1/2" SAI O-ring



TRACTOR MOUNTED DRILLING RIG

Tractor Mounted Drilling Rig DDJC500. This Rig is a Wireline system powered by Kubota 4-Cylinder 97 HP (Turbo Charger)/ 2600 rpm.

***Standard Rig can drill up to PQ 150 meter, HQ 300 meter, NQ 450 meter, while *Modified Rig can drill up to PQ 200 meter, HQ 350 meter, and NQ 500 Meter.**

- **Driven by Kubota Diesel Engine 97 hp (Turbo)**
- **Rotary Speed up to 900 Rpm (High/Low Transmission)**
- **Dry Weight Engine (exclude prime) 350 kg. The heaviest Part in this rig)**
- **Oil Capacity 100 ltr of Hyd. Tank**
- **Diesel Fuel Tank Capacity 50 Liter**
- **Completed Hyd. Hose with quick join coupling**

Systems :

- **Full hyd. System**
- **Hyd. Top drive**

Dimension :

- **Length x Width x Height : 3.40m x 1.50m x 165m (without mast)**
- **Weight : 2500 kg**



Quality Management



Occupational Health & Safety Management



Environment Management

SPECIFICATION DDLY38



ENGINE	: Deutz 6L912 2500 Rpm 115 HP
GEAR BOX	: 1st Gear 300 - 400 Rpm 2nd Gear 500 - 600 Rpm 3rd Gear 700 - 800 Rpm 4th Gear 900 - 1000 Rpm
TRANSMISSION	: Low and High
CLUTCH	: 14" Clutch Assembly Manual Clutch Lever Set Up
TRANSMISSION TO CHEST	: Cross Joint
ELECTRICAL	: Electrical Start Panel with Warning Lights - Low Oil Pressure & High Temperature Gauges
WIRELINE	: Drive by Hydraulic Motor
DRILL HEAD CHUCK JAWS	: Hydraulic System
FOOT CLAMP JAWS (HYDRAULIC SYSTEM)	: Full Set of Foot Clamp Jaws NQ Tungsten Inserts HQ Tungsten Inserts PQ/HWC/HWT Tungsten Inserts

This unit is equipped with Hydraulic Rod Breaker.



SPECIFICATION DDLY38

Package all mounted on 5 meter x 2 meter Fully Plated Skid with Tow Points, platforms are around the rig and Save Guard in every turning parts.

DRILLING DEPTHS BASED		STANDARD	MODIFIED
ON CLEAN HOLE	: NQ	400 Meter	650 Meter
	: HQ	300 Meter	450 Meter
	: PQ	130 Meter	250 Meter

MAIN PUMP : E.T.N. MEXICO PVE19AR
Deutz linked with Belt

MAIN VALVE BANK : Commercial 5 Level Valve Bank

MAST : Telescopic 10m
at the top of Mast equipped with Fall Arrester system

LIFT CYLINDER : Single Stroke

WIRELINE : Driven by Hydraulic Motor

WIRELINE SPOOL : Radial Made with 650 meter & 6mm Wire

HEAD OPENER : Hydraulic Head Opener

MUD MIXER : Operated by Hydraulic

FOOT CLAMP : Hydraulic operated from Main Valve Bank
Radial made Foot Clamps

HYDRAULIC TANK : 100 Liter Capacity

MUD PUM ENGINE : Yanmar TS230R, 2500 Rpm, 23 HP.

MUD PUMP : WII22 535 John Bean Mud Pump (FMC)
1000 PSI max Pressure with Relief Valve
Fitted 2" inlet, 160 ltr/minute

MAIN HOIST : Max Pull 10150 lbf
Rope 19mm, 25 Meter



SPECIFICATION DDLY 44

The modular concept of this Rig permits the operator to select components for a system, which is specifically tailored to meet certain drilling requirements. The DDLY 44 has an important safety feature, namely an automatic pre-torque and breakout tool. The drill can be trailer mounted and skid mounted for vertical and angle drilling. The Modified DDLY 44 can drill up to 550m PQ size, 750 m HQ size, 1000 m NQ Size and 350m Open Hole of 8"-10" size for waterwell drilling (depend on the ground condition). This rig equipped with four speed transmission gear.



DIMENSION

Length x Width x Height : 4.11m x 2.65m x 1.62m (without mast)

Tower Height : 10m (550 kg)

Total Weight : 4650 kg

Mast : Telescopic

SPECIFICATION DDLY44

NO.	DETAILS	WEIGHT
1.	Main Engine Deutz Engine Modified 160 hp	600 kg
2.	Transmission	600 kg
3.	Gear Box	100 kg
4.	Head Assy	250 kg
5.	Chassis (Base)	450 kg
6.	Chassis (Upper) + Bracket Mast / Hyd.	300 kg
7.	Drum Wireline / Cable	125 kg
8.	Hyd. Pump + Control Valve	80 kg
9.	Fuel Tank / Hyd. Tank	70 kg
10.	Mast Bottom	160 kg
11.	Mast Middle	150 kg
12.	Mast Top	240 kg
13.	Hyd. Mast	110 kg
14.	Port Mast 2 Pcs Pipe + Mangky Mast (Total 9meter)	270 kg
15.	Injection pump, with output 37 GPM/minutes (FMC Pump), is driven by 23 hp Yanmar engine	350 kg

Main Engine :

Tipe Mesin : DEUTZ F6LQ12
RPM : 3000 RPM
HP : 115 HP
Number of Cylinder : 6
Starter System : Elektrik Starter
Engine Oil Capacity : 11 liters (SAE 40)
Solar Tank Capacity : - + 50 Lt
Net weight : 600 Kg

Electrical

Battery : 12V / 100Ah
System : DC



UDR 1600D

The UDR range of exploration core drilling rigs consists of five different models, with N size drilling capacity ranging from 400 m to 2300 m in depth.

The Crawler Mounted UDR 1600D has been designed specifically for diamond coring in medium to deep drilling surface exploration application where site access limits the use of larger drills. The UDR 1600D's compact design combined with its self propelled crawler track drive system makes it an ideal choice for drilling operation in jungle or hilly terrain where the use of heavy truck is difficult.

European grade hydraulics has been utilised for optimum efficiency. This combined with its heavy duty mast, sub structure and high output diesel power pack ensures outstanding drilling performance and reliability.

Safety is recognised as a key priority at UDR. Our standard offering includes purpose designed rod safety spin guards, driller's and offside's work platform

The UDR 1600D can easily be transported in 40ft sea containers

UDR 1600D Features:

- Crawler Mounted design
- Cummins 6CTA diesel power plant - rated output @179KW (2,200 RPM)
- "P" Chuck drive rotation head
- Rotation Head - Max High Speed Rotation @1,200 RPM
- "P" chuck drive rotation head
- Rotation Head - Max high speed rotation @1200 RPM
- B, N, H and P size chuck and rod clamp jaws
- 3.5 metre feed stroke
- 6 metre rod pulling capability
- Rod Safety Spin Guards
- Engine protection auto shut down system
- Maximum depth rating of 1700 metres in N size

(NOTE: Core drilling depth capacity's based on straight vertical, clean drill holes. No allowance made to break core).



Quality Management



Occupational Health & Safety Management



Environment Management

DATASHEET UDR1600D

Power unit		
Manufacturer	Cummins	
Model	Cummins 6CTA8.3	
Engine power @ 2200 RPM	269 kW	351 hp
Diesel type	Turbo charged	

Rotation head — P chuck drive, hydraulic open, spring close		
Feed force	50 kN	11 240 lbf
Pull force	189 kN	42 490 lbf
Max torque	5500 Nm	4045 ft/lbf
Max rotation, rpm	1200 rpm	
Feed stroke	3500 mm	138 in
Max inside diameter	117 mm	4.6 in
Gear box	4 shifts	
Ratio:	Spindle speed, rpm	
1st	138-190	
2nd	277-378	
3rd	495-675	
4th	866-1200	

Hydraulic system		
Working pressure	28 Mpa	4060 psi
Cooling	Air cooled	

Mast		
2 sections, hydraulic powered life/down, with mast dump		
Length	13 m	39 ft
Drilling angle	45° to 90°	
Mast dump	1100 mm	43.3 in
Rod pulling length	6 m	20 ft

Wireline winch		
Max pull, bare drum	11 kN	2470 lbf
Pulling speed, bare drum	120 m/min	394 ft/min
Rope diameter / length	6.6 mm / 1500 m	0.26 in / 4920 ft

Main hoist		
Max pull, bare drum	135 kN	30 350 lbf
Pulling speed, bare drum	40 m/min (low) 80 m/min (high)	131 ft/min 262 ft/min
Rope diameter/length	22 mm / 35 m	0.87 in / 115 ft

Rod clamp	
Jaw sizes	B, N, H, P

Water pump		
Max flow	320 L/min	84.5 USgal/min
Max pressure	10 MPa	1450 PSI

Track		
Track pad width	400 mm	15.8 in
Max up hill angle	30°	
Haul capacity	100 kN	22 480 lbf

Weight		
Total weight	11 000 kg	24 250 lb

Shipping dimension	
5250 x 2320 x 2600 mm	207 x 91.4 x 102 in

Depth capacity*		
B	2200 m	7216 ft
N	2000 m	6560 ft
H	1500 m	4920 ft
P	1000 m	3280 ft

(NOTE: Core Drilling depth capacity's based on straight, vertical, clean drill holes. No allowance made to break core.)



SUPPORT EQUIPMENT



**4 UNITS TRACTOR TRUCK TO
SUPPORT MOVING ACTIVITIES**



2 UNITS TRACK MOUNTED



1 UNIT CRANE TRUCK



1 UNIT HILUX CABIN



1 UNIT 4X4 PAJERO WAGON



1 UNIT SUBSTRUCTURE



BACK UP SPAREPARTS



FORKCLIFT



EXCAVATOR



Company Experiences

NO	Job Description	Project Name Operator's Name	Contract No.	Period		Contract Value
				Start	End	
1	Tahun 2019 Eksplorasi CBM (Coal Bed Methane), Desa Tanjung Baru Kecamatan Penukal Utara Kabupaten Pali, Sumatera Selatan	Pemboran CBM Ephindo Sekayu 2 Inc. Mushola 20D, Kemang Selatan, Cilandak Timur, Jakarta, 12560	ES2I/001-DD-19-CA	04-Aug-19	03-Sep-19	1.255.288.565
2	Tahun 2018-2019 Pemboran Coking Coal (Batubara) Kabupaten : Murung Raya, Kalimantan Tengah	Drilling Services 4 Contracts : ADARO METCOAL : (1) Maruwai Coal - Selesai November 2018 (2) Juloi Coal (3) Kalteng Coal (4) Sumber Barito Coal (Moving by Helicopter)	B08-PC0618-000000288-1	20-May-18	20-Oct-19	15.946.500.000
3	Tahun 2017-2018 Pemboran Minyak Dangkal Kab. Banyuasin, Palembang, Sumatera Selatan	Iliran High Field Test Study - Hole Drilling Services PT Medco E&P Rimau (2nd & 3rd Phase) - Direct Appointment	3510005687 (ex BF11388)	30-Nov-17	29-Nov-18	17.757.700.000
4	Tahun 2016 - 2017 Pemboran Minyak Dangkal Kab. Banyuasin, Palembang, Sumatera Selatan	Iliran High Field Test Study - Hole Drilling Services PT Medco E&P Rimau (1st Phase)	3510005327 (ex FP335692)	26-Sep-16	25-Sep-17	6.544.875.000
5	Tahun 2017-2018 Pemboran Coal Bed Methane (CBM), Rengat, Provinsi Riau	Provision of Mobile CBM Rig and Associated Services for Rengat Field - Indon CBM Pty Ltd.	01/ICL/XI/2017	09-Nov-17	09-Jan-18	2.871.200.000
6	Tahun 2017-2018 Pemboran Timah, Kepulauan Bangka Belitung	Jasa Pekerjaan Pemboran Darat (Bor Mekanik) 10.000 Meter PT Timah TBK	7000003161	21 Agustus 2017	20 Maret 2018	13.144.330.500
7	Tahun 2011 Pemboran Coal Bed Methane (CBM), Samarinda, Kalimantan Tengah	Pemboran Coring 1 Sumur di Cekungan Kutei PPTMGB "Lemigas"	01.SPPJ/91.04/BLM P2K.1 PKL 2011	03-Nov-11	29-Dec-11	4.076.627.500
8	Tahun 2013 Pemboran Uranium, Pontianak, Kalimantan Barat	Pemboran Inti Sumberdaya Uranium BATAN (Badan Tenaga Atom Nasional)	570/PL0001/PGN/2013	18-Jul-13	20-Oct-13	3.504.325.000
9	Tahun 2011-2013 Pemboran Coking Coal, Juloi, Kalimantan Tengah	Coking Coal Core Drilling BHP Billiton (PT. Juloi Coal)	25629-000-GSC-PTBI-00001	12-Dec-11	28-Feb-13	86.718.520.000
10	Tahun 2015 Pengeboran Mineral, Kab. Bangka Belitung	Energi Sumber Daya Mineral , ESDM Bandung, Pengeboran Logam Timah Primer di Daerah Parit Tebu, Kec. Gantung, Kab. Bangka Belitung Timur, Prov. Bangka Belitung	22/SPK/P2K/PSDG/BGD/2015	27-Jul-2015	31-Aug-2015	1.874.591.329
11	Tahun 2015 Pemboran Mineral Logam, Kab. Solok Selatan, Sumatera Barat	Energi Sumber Daya Mineral , ESDM Bandung, Pengeboran Mineral Logam di Daerah Ulu Suliti-Tanjung Limau Kapeh Kec. Koto Parik Gadang Diatesh Kab.Solok Selatan Prov. Sumatera Barat	23/SPK/P2K/PSDG/BGD/2015	27-Jul-2015	30-Aug-2015	1.899.098.875



Quality Management



Occupational Health & Safety Management



Environment Management

Company Experiences

NO	Job Description	Project Name Operator's Name	Contract No.	Period		Contract Value
				Start	End	
12	Tahun 2013-2014 Pemboran Emas, Pulau Bacan, Halmahera Selatan	Pengadaan Rig Longyear 38 dan Pengeboran Mineral Emas di Pulau Bacan- Halmahera Selatan, PT. Bukit Fajar Mandiri (Kerjasama dengan Pemerintah Korea	001/D2-LGL/HMR/IV-2013	23-Apr-2013	19-Feb-2014	4.191.750.000
13	Tahun 2011-2013 Pemboran Batubara, Kab. Muara Teweh, Kalimantan Tengah	Pengeboran Batubara PT. Tamtama Perkasa (Barito Group)	085/TP/HK6/X/2011	28-Sep-2011	26-Mar-2013	4.172.896.350
14	Tahun 2010-2012 Pemboran Batubara, Kab. Musi Banyuasi Prov. Sumatera Selatan	Pengeboran Barubara (Open Hole & Coring) PT. Bumi Semesta Lestari Kec. Bayunglincir dan Kec. BatanghariLeko, Kab. Musi Banyuasi Prov. Sumatera Selatan	BSL0410	2-Jun-2010	31-Jul-2012	2.979.639.950
15	Tahun 2010-2012 Pemboran Batubara, Kalimantan Tengah	Pengeboran Bahan Galian Batu Bara PT. Titan Mining Indonesia	024/PKS/TMI-DD/X/10	28-Oct-2010	31-Jan-2012	3.708.859.450
16	Tahun 2009 Pemboran Batubara, Kab. Paser, Kalimantan Timur	Pengeboran Batubara (Open Hole & Coring) PT. Batubara Selaras Saptadi Tanah Grogot, Kab. Paser, Kalimantan Timur	1	30-Apr-2009	31-Jul-2009	1.200.883.561
17	Tahun 2008 Pemboran Batubara, Kab. Muara Lahung, Kalimantan Tengah	Pengeboran Batubara (Open Hole & Coring) PT. Jembayan Muarabayadi Muara Lahung, Kalimantan Tengah	JMB/CON-01/DUNGGIO/III/C	15-Feb-2008	14-Aug-2008	1.581.238.035
18	Tahun 2014 Pemboran Batubara, Kab. Sarolangun, Jambi	Jasa Pekerjaan Pengeboran di Wilayah IUP PT. Bangun Persada Jambi Energi Daerah Sarolangun, Jambi & Jasa Pekerjaan Pengeboran sesuai kaidah JORC di wilayah IUP PT Mahakarya Abadi Prima Kab. Sarolangun, Propinsi Jambi - PLN	013/PJ/DIRPLNBB/2014 & 007/BAN-DD/2014	11-Feb-2014	30-May-2014	2.100.000.000
19	Tahun 2012-2015 Pengeboran Emas	Pekerjaan Pengeboran Diamond untuk Proyek Bakau, PT J Resource Bolaang Mongondow	288	3-Dec-2012	5 Juni 2015	25.796.400.000
20	Tahun 2009-2011 Pemboran Batubara, Kalimantan Tengah	Pengeboran Batubara (Open Hole & Coring) PT. Daya Bumindo Karuni (Barito Group) di Kalimantan Tengah	DBK01	2-Mar-2009	27-Dec-2011	4.028.961.244
21	Tahun 2010 Pemboran Batubara, Aceh	Pengeboran Batubara (Open Hole & Coring) PT. Bhoruka Powed Subulussalam, Aceh	BP01	8-Jan-2010	7-Mar-2010	1.500.000.000
22	Tahun 2005-2006 Pemboran Batubara, Kalimantan Tengah	Drilling Contract between PT Maruwai Coal and PT Dunggio Drilling (Open Hole & Coring)	PTMC/DRILL001/03/05	6-Mar-2005	17-Jan-2006	10.076.367.599,-
23	Tahun 2005 - 2007 Pemboran Coking Coal, Lahai, Kalimantan Tengah	Drilling Contract between PT Lahai Coal and PT Dunggio Drilling (Open Hole & Coring)	M-01.05.01.07.04-D-7083LII	28-Jul-2005	21-Feb-2007	8,703,841,447,-



Company Experiences

NO	Job Description	Project Name Operator's Name	Contract No.	Period		Contract Value
				Start	End	
23	Tahun 2005 - 2007 Pemboran Coking Coal, Lahai, Kalimantan Tengah	Drilling Contract between PT Lahai Coal and PT Dunggio Drilling (Open Hole & Coring)	M-01.05.01.07.04-D-7083LI	28-Jul-2005	21-Feb-2007	8,703,841,447,-
24	Tahun 2006-2008 Pemboran Batubara, Kalimantan Tengah	Drilling Contract between PT Kalteng Coal and PT Dunggio Drilling (Open Hole & Coring)	0665-C-0001	3-Aug-2006	7-Mar-2008	6.523.876.939
25	Tahun 2007-2008 Pemboran Batubara, Kalimantan Tengah	Drilling Contract Works Services at PT Arutmin Indonesia	BPN/07/C01	22-May-2007	2-Feb-2008	14.618.364.577,-
26	Tahun 2007-2008 Pemboran Batubara, Kab. Murung Raya, Kalimantan Tengah	Pemboran Eksplorasi Batubara wilayah PKP2B PT Marunda Graha Mineral Kecamatan Laung Tuhup Kabupaten Murung Raya Kalimantan Tengah	062/PJ-BOR/MGM-DD/IX-07	25-Sep-2007	3-Mar-2008	1.275.306.116,-



DD DRILLING PROJECTS



**MEDCO ENERGY
OIL DRILLING**



**ADARO METCOAL
MOVING RIG BY CHOPPER**



**EPHINDO
CBM DRILLING**



**ADARO METCOAL
COAL DRILLING**



**LEMIGAS
CBM DRILLING**



**BHP BILLITON
ACCESS PREPARATION**



**BHP BILLITON
REHABILITATION**



**BFM - KOREAN GOVERNMENT
GOLD DRILLING**



**TIMAH TBK.
TIN DRILLING**



**INDON CBM PTY LTD.
CBM DRILLING**



**BHP BILLITON
MOVING RIG BY CHOPPER**



**ARUTMIN INDONESIA
COAL DRILLING**



Drilling Contractor Services

COAL - MINERAL - OIL & GAS - GEOTHERMAL - WATERWELL - BLASTHOLE DRILLING

PT DUNGGIO DRILLING, JL. Industri Selatan 6 Blok GG 9A, Jababeka II, Industrial Estate, Cikarang Selatan, Bekasi 17550
Ph. 021 - 89841343, Fax 021 - 89841342, email: info@dunggiodrilling.com, Website: www.dunggiodrilling.com