



**PT DUNGGIO DRILLING  
DRILLING CONTRACTOR**

*Safety for us & Environment for the future*

**DRILLING PROJECT MANAGEMENT & RIG SERVICES**



# COMPANY PROFILE

*Your Trusted Business Partner*

# TABLE OF CONTENT

<b>Vission and Mission</b>	<b>1</b>
<b>DD Core Value</b>	<b>2</b>
<b>DD is your Trusted Business Partner</b>	<b>3</b>
<b>Company History &amp; Milestone</b>	<b>4</b>
<b>Organization Chart</b>	<b>6</b>
<b>Healthy, Safety &amp; Environment</b>	<b>8</b>
<b>Rig &amp; Machine Inventory List</b>	<b>9</b>
<b>Rig DDJC175</b>	<b>10</b>
<b>Rig DDJC250</b>	<b>11</b>
<b>Rig DD-JC500</b>	<b>12</b>
<b>Rig Tractor Mounted DD-JC500</b>	<b>14</b>
<b>Rig DDLY38</b>	<b>15</b>
<b>Rig DDLY44</b>	<b>17</b>
<b>RIG UDR1600D (351 HP)</b>	<b>19</b>
<b>Support Equipment</b>	<b>21</b>
<b>Company Experience</b>	<b>22</b>
<b>DD Drilling Projects</b>	<b>25</b>



# VISION & MISSION

## **VISI** COMPANY VISION **PERUSAHAAN**

**PT. Dunggio Drilling bertekad menjadi simbol kontraktor pengeboran terbaik diregional**

*PT Dunggio Drilling determines to be the symbol of Excellence Drilling Contractor in Regional.*



## **MISI** COMPANY MISSION **PERUSAHAAN**

**Memberikan jasa pengeboran yang berkualitas dan efisien dengan harga kompetitif, didukung teknologi mesin bor yang dimodifikasi dengan baik serta mengutamakan keselamatan dan keselamatan kerja pada setiap aktivitasnya.**

*Provide quality and efficient Drilling Service with Competitive Price, integrate with good modified drilling technology machine and also value health & Safety in all we do.*



# D2 CORE VALUE

- D** Develop Always develop mutually beneficial partnership with client, employee & Society
- U** Upholding High Health & Safety Standard Upholding high health & safety standard in all company operation
- N** New Technology Modification Always looking & deliver for new technology in innovative ways to meet client expenctation
- G** Growing Growing together with client, supplier, employee and society
- G** Good Good Core Recovery and Drilling result
- I** Integrity With interity, we value openness and honesty in all our operation activities
- O** On time On time in delivering project target timeline to client

# Dunggio Drilling is Your Trusted Business Partner

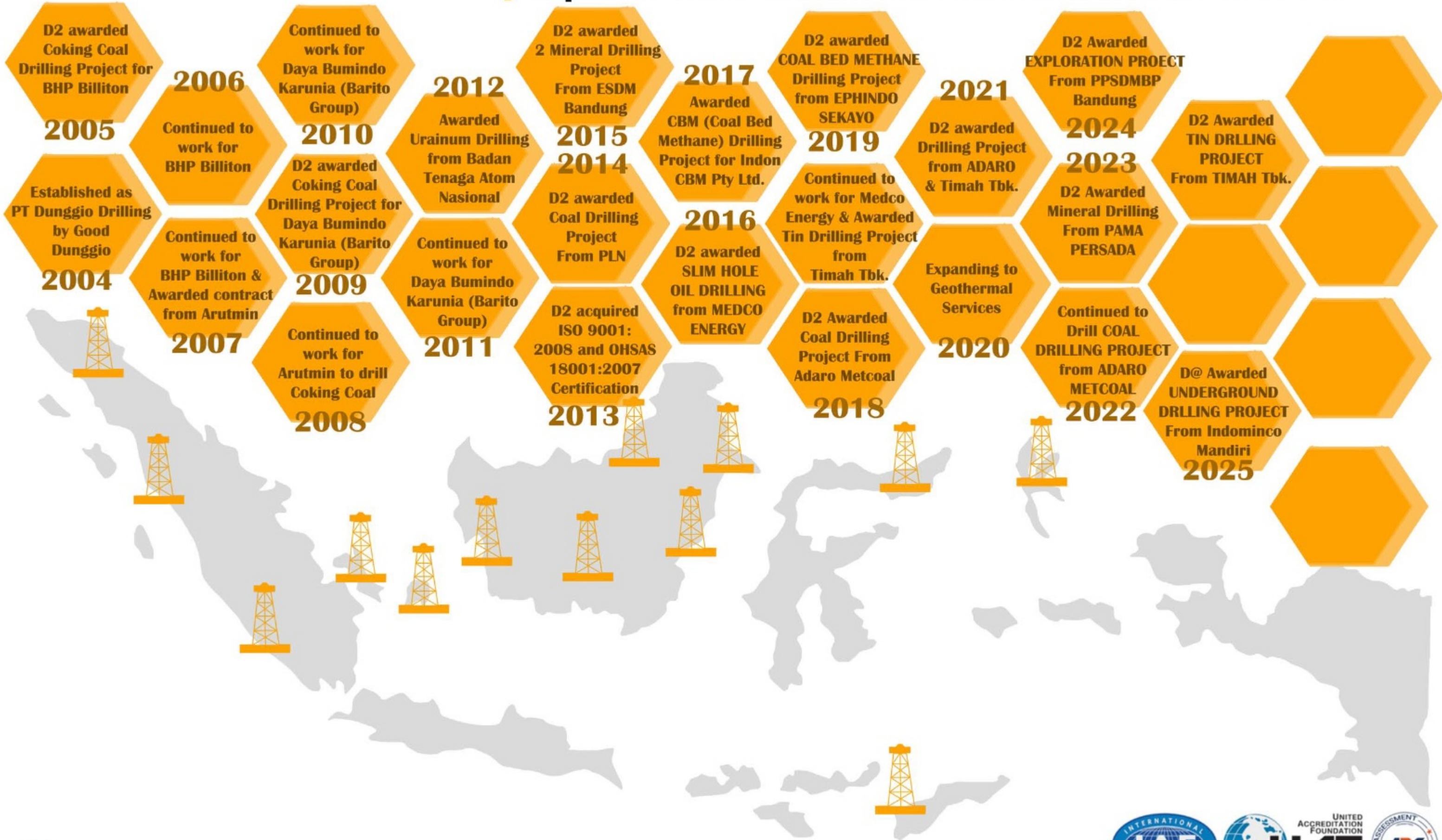
DUNGGIO DRILLING was established in 2004 by Good Dunggio in the field of Drilling services to drill for Coal and Mineral. Currently expanding its business into Oil & Gas and Geothermal drilling services.

We provide Drilling Project Management and Rig Services focussing on client satisfaction with a diverse proven Land Drilling Rig Fleet managed by highly trained and experience staff, with an exceptional work safety record and high QHSE Standard.

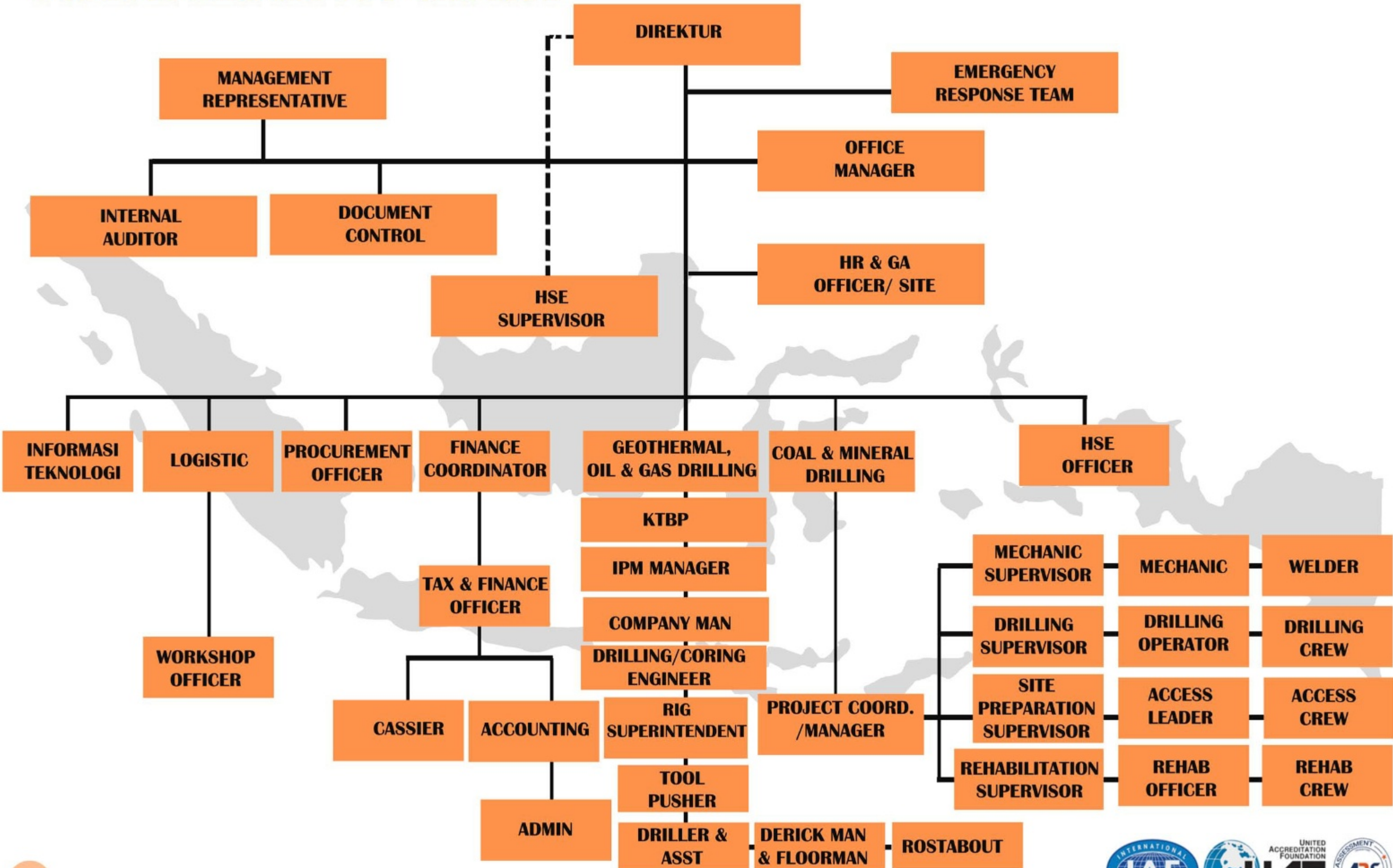


# COMPANY HISTORY & MILESTONE

Founded in 2004, Dunggio Drilling focus on Land Rig Drilling services for Coal & Mineral Drilling and currently expanding capabilities and services into Oil & Gas and Geothermal



# ORGANIZATION CHART



# Healthy, Safety & Environment

DUNGGIO DRILLING is committed to improve quality, safety and occupational health in accordance with Standard Integration of

- The International Quality Management ISO 9001:2015
- The International Occupational Health and Work Safety Standard Management ISO 45001:2018
- The International Environmental Management System ISO 14001:2015



ISO 9001: 2015



ISO 45001: 2018



ISO 14001:2018

The Company applied these QHSE International Standard with the aim to prevent things that are harmful to health, or injury to employees, and detrimental impact on the environmental pollution in the entire operation of PT Dunggjo Drilling to exceed Customer expectation.

To achieve that goal, management and staff have a leadership function in the communication and implementation to ensure compliance with QHSE policies standards.

# Rig and Machine Inventory List

NO	RIG TYPE & MACHINE	QUANTITY	OUTPUT	MERK & TYPE	YEAR OF MANUFACTURE	CONDITION
1	UDR 1600D	1 Unit	351 hp	UDR	2012	Good
2	DDLY 44	3 units	110 hp	Longyear	2000	Good & Modified
3	DDLY 38	5 units	80 hp	Longyear	2000	Good & Modified
4	DDJC-250	4 unit	40 hp	Jacro	2012	Good
5	DDJC-500	5 unit	80 hp	Jacro	2012	Good
6	TRACTOR MOUNTED DRILLING RIG DDJC500	1 Unit	97 hp	Jacro	2016	Good
7	DDJC-175	11 Units	31 hp	Jacro	2010	Good
8	Track Mounted	2 units	110 hp	Hitachi	2000	Good
9	Forkclift Patria	1 unit	100 hp	Komatsu	2020	Good
10	Tractor Kubota MX 5100D	1 unit	45 hp	Kubota	2010	Good
11	Tractor Kubota M 9540/R	1 unit	84 hp	Kubota	2012	Good
12	Tractor Kubota M30	2 units	40 hp	Kubota	2016	Good
13	Excavator	3 unit	150 hp	Komatsu	2012	Good
14	Substructure	4 unit	-	Steel	2015	Good

**ALL THESE RIG AND SUPPORT EQUIPMENT ARE COMPLETELY OWNED 100% BY DUNGGIO DRILLING**



# SPECIFICATION DDJC175

**A Man Portable Rig. This unit can drill up to PQ Coring 10meter, HQ Open Hole 120 meter (Single tube), HQ Coring up to 100meter (triple tube).**

## **SYSTEM :**

- **Full hyd. System**
- **Hyd. Top drive**
- **Skid Mounted with knock down assembly**
- **Pull up/Down by Chain RSS0, driven by hyd. Motor.**



## **SPECIFICATION :**

- **Driven by Vanguard petrol engine 31 hp**
- **Rotary speed 250 rpm up to 500 rpm**
- **Oil capacity 40 Liter of Hyd. Tank**
- **Complete Hyd. Hose with quick join coupling**



# **SPECIFICATION DDJC250**

**The standard type can drill up to PQ 60m, HQ 100m, NQ 150m and modified type can drill up to PQ 100m, HQ 150m, NQ 200m.**



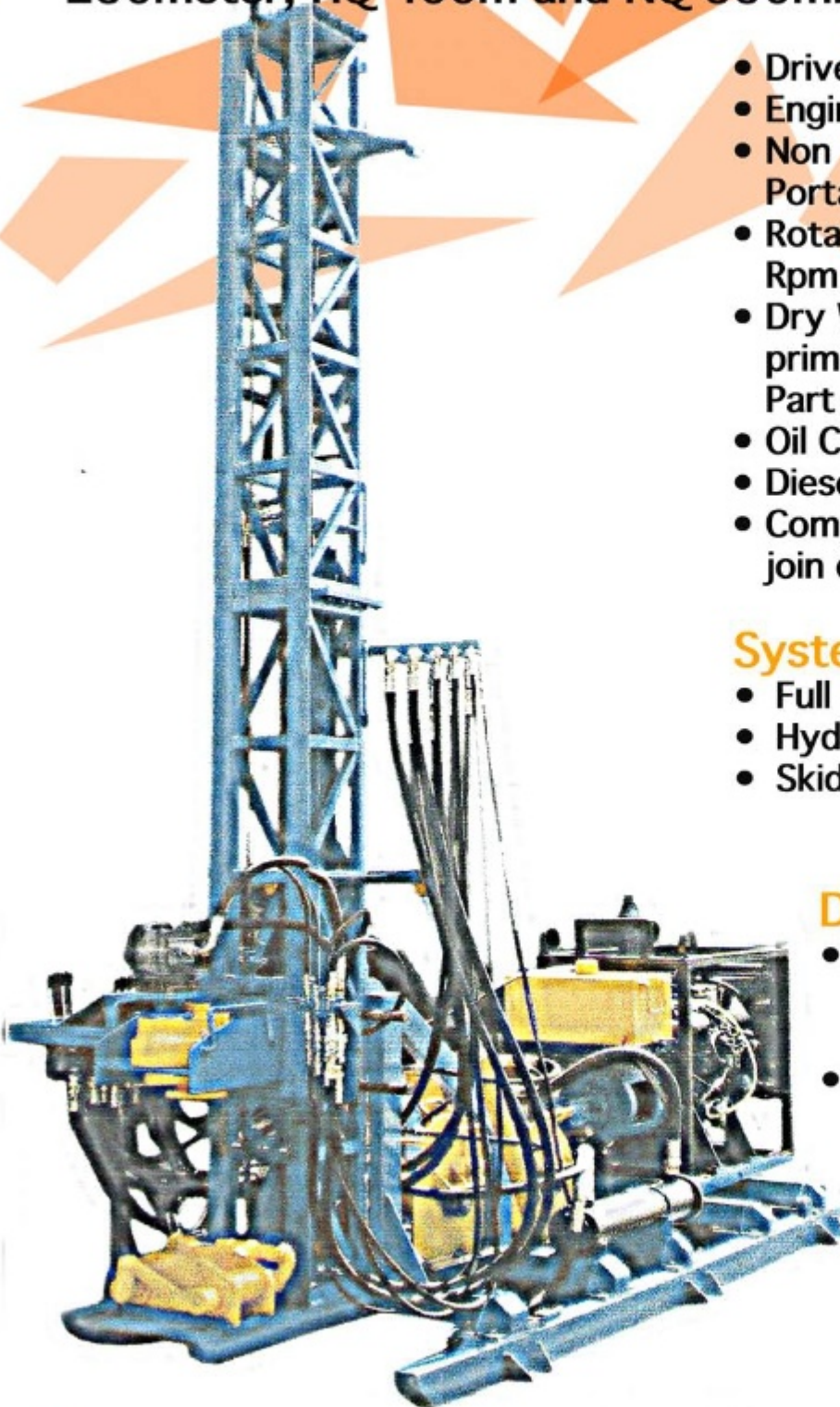
## **SPEISIFICATION :**

- 1) Non Winching, but Man Portable**
- 2) Rotary speed up to 600 rpm (low and high gear box)**
- 3) Dry Weight Engine (Exclude Prime) 250 kg.  
The heaviest part in this rig.**
- 4) Oil capacity 100 Liter of Hyd. Tank**
- 5) Diesel Fuel Tank Capacity 30 liter**
- 6) Complete Hyd. Hose with quick Join Coupling**
- 7) FMC 535 Mud Pump, variable speed (No V-belt)**
- 8) Wireline system powered by Kubota 4-Cylinder:**
  - 40 HP / 3000 rpm (standard type) and**
  - 60 HP / 3000 rpm (modified).**

# SPECIFICATION DDJC500

Wireline system powered by Kubota 4-Cylinder 97 HP (Turbo Charger)/ 2600 rpm.

\*Standard Rig can drill up to PQ 150 meter, HQ 300 meter, NQ 450 meter, while \*Modified Rig can drill up to PQ 250meter, HQ 400m and NQ 550m.



- Driven by Kubota Diesel Engine 97 hp (Turbo)
- Non Winching, but Man Portable
- Rotary Speed up to 900 Rpm (High/Low Transmission)
- Dry Weight Engine (exclude prime) 350 kg. The heaviest Part in this rig
- Oil Capacity 100 ltr of Hyd. Tank
- Diesel Fuel Tank Capacity 50 Liter
- Completed Hyd. Hose with quick join coupling

## Systems :

- Full hyd. System
- Hyd. Top drive
- Skid Mounted

## Dimension :

- Length x Width x Height : 3.40m x 1.50m x 165m (without mast)
- Weight : 2500kg

# SPECIFICATION DDJC500

NO.	DETAILS	WEIGHT
1.	Engine Kubota V 3300	529 kg
2.	Chasis, Hyd. Hose , Control bank, Drum Wireline	795 kg
3.	Bottom Mast	734 kg
4.	Top Mast	175 kg
5.	Gear Box , Water swivel	144 kg
6.	Fuel Tank	70 kg
7.	Skid Base	238 kg
8.	Support Mast	47 kg
9.	Foot clamp	54 kg

## 1. UNIT POWER SUPPLY (NON ENGINE DIESEL)

- Hydraulic power by Gear pump 70 + 16 ltr/minute (for rotary, and for up/down) max pressure 3000 psi/210 bar
- Hydraulic oil tank : 80 Litre
- Diesel Fuel tank : 30 Litre

## 2. UNIT CONTROL DEVICE

- Hand control valve 3Bank 3/4" Monoblock Branded Integral by Italy HDM 20-3D/ d5 (for hydraulic Rotation, Hydraulic Winch and Hydraulic Wireline)
- Hand control Valve 5bank 1/2" Monoblock branded Integral by Italy HDM 18-50 1/2" (for hydraulic Up down, Hydraulic lift mash, Hydraulic sliding, hydraulic Jack Mash and Clamp Chuck Assy)
- Relief Valve : For adjustment pressure up/down RV2-1/2 max, pressure 3000 psi
- Regulator Valve : For adjustment pressure flow up/down integral FRV 2-1/2"
- Brake Valve : For adjustment brake winch and wireline, branded integral Italy CBV2-1/2" 0-3000 psi
- Pressure Gauge : By skon USA 0-250 psi

## 3. UNIT POWER DEVICE

ROTARY HEAD MOTOR DDJC500 5(RH 1/2") 4000 Series 109-1116-006 Eaton USA

- Speed Power : 0-1200 rpm
- Power Pressure : 0-3000 psi
- Speed Rotary : 700 -1500 rpm

UP/DOWN CYLINDER HYDRAULIC DDJC500 5CH Dia 85x100x50xStroke 1650mm

- Torsi Capacity : 915MM (66641 lb/in)
- Speed Power : 1000MM/10 Second
- In/out prot : 1/2" SAI O-ring

WIRELINE HYDRAULIC MOTOR DDJC550 5(RH 2/2) 2000 series 104-1228-0006 ETN USA

- Torsi Capacity : 452NMC (3961 lb/in)
- Speed Power : 0-250 Rpm
- In/out prot : 1/2" SAI O-ring

WINCH HYDRAULIC MOTOR DDJC500 5(RH 2/2) 4000 Series 109-1215-006 ETN. USA

- Torsi Capacity : 452NMC (3961 lb/in)
- Speed Power : 0-250 Rpm
- In/out prot : 1/2" SAI O-ring

# TRACTOR MOUNTED DRILLING RIG

**Tractor Mounted Drilling Rig DDJC500. This Rig is a Wireline system powered by Kubota 4-Cylinder 97 HP (Turbo Charger)/ 2600 rpm.**

**\*Standard Rig can drill up to PQ 150 meter, HQ 300 meter, NQ 450 meter, while \*Modified Rig can drill up to PQ 200 meter, HQ 350 meter, and NQ 500 Meter.**

- **Driven by Kubota Diesel Engine 97 hp (Turbo)**
- **Rotary Speed up to 900 Rpm (High/Low Transmission)**
- **Dry Weight Engine (exclude prime) 350 kg. The heaviest Part in this rig)**
- **Oil Capacity 100 ltr of Hyd. Tank**
- **Diesel Fuel Tank Capacity 50 Liter**
- **Completed Hyd. Hose with quick join coupling**

## **Systems :**

- **Full hyd. System**
- **Hyd. Top drive**

## **Dimension :**

- **Length x Width x Height : 3.40m x 1.50m x 165m (without mast)**
- **Weight : 2500 kg**



# SPECIFICATION DDLY38



<b>ENGINE</b>	<b>: Deutz 6L912 2500 Rpm 115 HP</b>
<b>GEAR BOX</b>	<b>: 1st Gear 300 - 400 Rpm 2nd Gear 500 - 600 Rpm 3rd Gear 700 - 800 Rpm 4th Gear 900 - 1000 Rpm</b>
<b>TRANSMISSION</b>	<b>: Low and High</b>
<b>CLUTCH</b>	<b>: 14" Clutch Assembly Manual Clutch Lever Set Up</b>
<b>TRANSMISSION TO CHEST</b>	<b>: Cross Joint</b>
<b>ELECTRICAL</b>	<b>: Electrical Start Panel with Warning Lights - Low Oil Pressure &amp; High Temperature Gauges</b>
<b>WIRELINE</b>	<b>: Drive by Hydraulic Motor</b>
<b>DRILL HEAD CHUCK JAWS</b>	<b>: Hydraulic System</b>
<b>FOOT CLAMP JAWS (HYDRAULIC SYSTEM )</b>	<b>: Full Set of Foot Clamp Jaws NQ Tungsten Inserts HQ Tungsten Inserts PQ/HWC/HWT Tungsten Inserts</b>

This unit is equipped with Hydraulic Rod Breaker.

# SPECIFICATION DDLY38

Package all mounted on 5 meter x 2 meter Fully Plated Skid with Tow Points, platforms are around the rig and Save Guard in every turning parts.

DRILLING DEPTHS BASED ON CLEAN HOLE		STANDARD	MODIFIED
	: NQ	400 Meter	650 Meter
	: HQ	300 Meter	450 Meter
	: PQ	130 Meter	250 Meter

**MAIN PUMP** : E.T.N. MEXICO PVE19AR  
Deutz linked with Belt

**MAIN VALVE BANK** : Commercial 5 Level Valve Bank

**MAST** : Telescopic 10m  
at the top of Mast equipped with Fall Arrester system

**LIFT CYLINDER** : Single Stroke

**WIRELINE** : Driven by Hydraulic Motor

**WIRELINE SPOOL** : Radial Made with 650 meter & 6mm Wire

**HEAD OPENER** : Hydraulic Head Opener

**MUD MIXER** : Operated by Hydraulic

**FOOT CLAMP** : Hydraulic operated from Main Valve Bank  
Radial made Foot Clamps

**HYDRAULIC TANK** : 100 Liter Capacity

**MUD PUM ENGINE** : Yanmar TS230R, 2500 Rpm, 23 HP.

**MUD PUMP** : WII22 535 John Bean Mud Pump (FMC)  
1000 PSI max Pressure with Relief Valve  
Fitted 2" inlet, 160 ltr/minute

**MAIN HOIST** : Max Pull 10150 lbf  
Rope 19mm, 25 Meter



# SPECIFICATION DDLY44

The modular concept of this Rig permits the operator to select components for a system, which is specifically tailored to meet certain drilling requirements. The DDLY 44 has an important safety feature, namely an automatic pre-torque and breakout tool. The drill can be trailer mounted and skid mounted for vertical and angle drilling. The Modified DDLY 44 can drill up to 550m PQ size, 750 m HQ size, 1000 m NQ Size and 350m Open Hole of 8"-10" size for waterwell drilling (depend on the ground condition). This rig equipped with four speed transmission gear.



## DIMENSION

Length x Width x Height : 4.11m x 2.65m x 1.62m (without mast)

Tower Height : 10m (550 kg)

Total Weight : 4650 kg

Mast : Telescopic

# SPECIFICATION DDLY44

NO.	DETAILS	WEIGHT
1.	Main Engine Deutz Engine Modified 160 hp	600 kg
2.	Transmission	600 kg
3.	Gear Box	100 kg
4.	Head Assy	250 kg
5.	Chassis (Base)	450 kg
6.	Chassis (Upper) + Bracket Mast / Hyd.	300 kg
7.	Drum Wireline / Cable	125 kg
8.	Hyd. Pump + Control Valve	80 kg
9.	Fuel Tank / Hyd. Tank	70 kg
10.	Mast Bottom	160 kg
11.	Mast Middle	150 kg
12.	Mast Top	240 kg
13.	Hyd. Mast	110 kg
14.	Port Mast 2 Pcs Pipe + Mangky Mast (Total 9meter)	270 kg
15.	Injection pump, with output 37 GPM/minutes (FMC Pump), is driven by 23 hp Yanmar engine	350 kg

## Main Engine :

**Type Mesin : DEUTZ F6LQ12**  
**RPM : 3000 RPM**  
**HP : 115 HP**  
**Number of Cylinder : 6**  
**Starter System : Elektric Starter**  
**Engine Oil Capacity : 11 liters (SAE 40)**  
**Solar Tank Capacity : - + 50 Lt**  
**Net weight : 600 Kg**

## Electrical

**Battery : 12V / 100Ah**  
**System : DC**



# UDR 1600D

The UDR range of exploration core drilling rigs consists of five different models, with N size drilling capacity ranging from 400 m to 2300 m in depth.

The Crawler Mounted UDR 1600D has been designed specifically for diamond coring in medium to deep drilling surface exploration application where site access limits the use of larger drills. The UDR 1600D's compact design combined with its self propelled crawler track drive system makes it an ideal choice for drilling operation in jungle or hilly terrain where the use of heavy truck is difficult.

European grade hydraulics has been utilised for optimum efficiency. This combined with its heavy dust mast, sub structure and high output diesel power pack ensures outstanding drilling performance and reliability.

Safety is recognised as a key priority at UDR. Our standard offering includes purpose designed rod safety spin guards, driller's and offside's work platform

The UDR 1600D can easily be transported in 40ft sea containers

## UDR 1600D Features:

- Crawler Mounted design
  - Cummins 6CTA diesel power plant - rated output @179KW (2,200 RPM)
  - "P" Chuck drive rotation head
  - Rotation Head - Max High Speed Rotation @1,200 RPM
  - "P" chuck drive rotation head
  - Rotation Head - Max high speed rotation @1200 RPM
  - B, N, H and P size chuck and rod clamp jaws
  - 3.5 metre feed stroke
  - 9 metre rod pulling capability
  - Rod Safety Spin Guards
  - Engine protection auto shut down system
- Maximum depth rating of 2000 metres in N size

(NOTE: Core drilling depth capacity's based on straight vertical, clean drill holes. No allowance made to break core).



# DATASHEET LDR1600D

Power Unit			Wireline winch		
Manufacturer	Cummins		Max pull, bare drum	11 kN	2470 lbf
Model	Cummins 6CTA8.3		Puling speed, bare drum	120 m / min	394 ft / min
Engine power @ 2200 RPM	269 kW	351 hp	Rope diameter / length	6.6 mm / 1500 m	0.26 in / 4920 ft
Diesel type	Turbo charged				
Rotation head – P chuck drive, hydraulic open, spring close			Main Host		
Feed force	50 kN	11 240 lbf	Max pull, bare drum	135 kN	30 350 lbf
Pull force	189 kN	42 490 lbf	Puling speed, bare drum	40 m / min ( low )	131 ft / min
Max torque	5500 Nm	4045 ft / lbf		80 m / min ( high )	262 ft / min
Max rotation, rpm	1200 rpm		Rope diameter / length	22 mm / 35 m	0.87 in / 115 ft
Feed stroke	3500 mm	138 in	Rod clamp		
Max inside diameter	117 mm	4.6 in	Jaw sizes	B. N. H. P	
Gear box	4 shifts		Water pump		
Ratio:	Spindle speed, rpm		Max flow	320 L / min	84.5 USgal / min
1st	138–190		Max pressure	10 Mpa	1450 PSI
2nd	277–378		Track		
3rd	495–675		Track pad width	400 m	15.8 in
4th	866–1200		Max up hill angle	30°	
Hydraulic system			Haul Capacity	100 kN	22 480 lbf
Working pressure	28 Mpa	4060 psi	Weight		
Cooling	Air cooled		Total Weight	11 000 kg	24 250 lb
Mast			Shipping Dimension		
2 sections, hydraulic powered lift / down, with mast dump			5250 x 2320 x 2600 mm	207 x 91.4 x 202 in	
Length	13 m	39 ft	Depth capacity*		
Drilling angle	45° to 90°		B	2200 m	7216 ft
Mast dump	1100 mm	43.3 in	N	2000 m	6560 ft
Rod pulling length	9 Meter	27 Feet	H	1500 m	4920 ft
			P	1000 m	3280 ft

(NOTE: Core Drilling depth capacity's based on straight, vertical, clean drill holes. No allowance made to break core).



# SUPPORT EQUIPMENT



**4 UNITS TRACTOR TRUCK TO SUPPORT MOVING ACTIVITIES**



**2 UNITS TRACK MOUNTED**



**1 UNIT CRANE TRUCK**



**1 UNIT MITSUBISHI CABIN**



**1 UNIT 4X4 PAJERO WAGON**



**1 UNIT SUBSTRUCTURE**



**BACK UP SPAREPARTS**



**FORKCLIFT**



**EXCAVATOR**

# Company Experiences

NO	Tahun Nama Paket Pekerjaan *) Lokasi Propinsi	Nama : Provek & Alamat Pencuna Jasa/Pemberi Tugas	No/Tanggal Kontrak atau B.A/Tgl. Serah terima	Total Meter Pemboran dan Ukuran Lubang Hole	Waktu Pelaksanaan Pekerjaan	
					Mulai	Selesai
1	2	3	4	5	6	7
1	Tahun 2024 - 2025 Pengeboran Batubara, Kalimantan Timur, Bontang	Perianian Pengeboran Eksplorasi Bawah Tanah ± 600 Meter PT Indominco Mandiri	No. 145/E-CTR/BTG/IMM/2024 1 Unit UDR1600D	2500 Meter 6", PQ, HQ	15 Okt 2024	on progress
2	Tahun 2024 Daerah Soe & Sekitarnya, Nusa Tenggara Timur (NTT)	Pengeboran <b>Passive Seismic Tomogra</b> <b>Pusat Survei Geolooi. Kementrian ESDM</b> Pengeboran PST untuk Pengukuran Gempa	08.1.BAHP/PSG/POK/JAB.KESDM/2024 5 (Lima) Unit Rig DDJC175	HQ	01-Aug-24	19-Sep-24
3	Tahun 2024 Daerah Lemang, Kabupaten Indagiri Hulu, Provinsi Riau	Pengeboran Batubara <b>Pusat Sumber Daya Mineral dan Panas Bumi, Kementrian ESDM</b> <b>1. Pemetaan Geologi</b> <b>2. Pemetaan Topografi LIDAR</b> <b>3. Pengeboran Batubara</b> <b>4. Geofisika Logging</b> <b>5. Analisis Laboratorium Batubara</b> <b>6. Pengolahan Data &amp; Estimasi Daya Batubara</b>	10/SPK/P2K-PSDMBP/BGD/2024 2 (Dua) Unit Rig DDJC175	HQ	07-Jun-24	Des 2024
4	Tahun 2023 Mineral Exploration, Ratatotok, Sulawesi Utara	Gold Exploration <b>Sumber Energi Jaya &amp; Pama Persada Nusantara</b>	JIEP/ENG-MD/23/016/KTK 7 (Tujuh) Rig	PQ, HQ, NQ	05-May-23	05-Sep-23
5	Tahun 2021-2023 Eksplorasi Coking Coal, Adaro Mining Indonesia	Pemboran Coking Coal <b>Maruwal Coal &amp; Lahai Coal (ADARO MET COAL)</b>	01 6 (Enam) Rig	PQ, HQ	07-Jun-21	30-Jun-23
6	Tahun 2021 Pemboran Mineral, Kepulauan Bangka & Belitung	Timah Exploration Jasa Pekerjaan Pemboran Darat (Bor Mekanik) 10.000 Meter PT	4000004853 6 (Enam) Rig	PQ, HQ, NQ	16-Apr-21	14-Nov-21
7	Tahun 2019 Methane), Desa Tanjung Baru Kecamatan Penukal Utara Kabupaten Pail, Sumatera Selatan	Pemboran CBM (Coal Bed <b>Ephindo Sekayu 2 Inc.</b> Mushola 20D, Kemang Selatan, Cilandak Timur, Jakarta, 12560	ES2/001-DD-19-CA 1 (Satu) Rig	1 Sumur 350 Mtr 8 1/2", 5.5", PQ, HQ	22-Jul-19	02-Sep-19
8	Tahun 2018-2019 Pemboran Coking Coal (Batubara) Kabupaten : Murung Raya, Kalimantan Tengah	Drilling Services 4 Contracts : ADARO METCOAL : (1) Maruwal Coal - Selesai November 2018 (2) Juloi Coal (3) Kalteng Coal (4) Sumber Barito Coal (Moving by Helicopter)	B08-PC0618-000000288-1	PQ, HQ	13-Feb-18	20-Oct-19
9	Tahun 2017-2018 Slim Hole Drilling, Kab. Banyuasin, Palembang, Sumatera Selatan	Oil & Gas Exploration Irian High Field Test Study - Hole Drilling Services <b>PT Medco E&amp;P Rimau</b> (2nd & 3rd Phase) -	3510005687 (ex BF11388)	1", PQ, HQ, NQ dan BQ	30-Nov-17	30-Nov-18
10	Tahun 2016 - 2017 Slim Hole Drilling, Kab. Banyuasin, Palembang, Sumatera Selatan	Oil & Gas Exploration Irian High Field Test Study - Hole Drilling Services <b>PT Medco E&amp;P Rimau</b> (1st Phase) - TENDER	3510005327 (ex FP335692)	6" dan PQ	26-Sep-16	25-Sep-17
11	Tahun 2017-2018 Pemboran Coal Bed Methane (CBM), Rengat, Provinsi Riau	Provision of Mobile CBM Rig and Associated Services for <b>Rengat Field - Indon CBM Pty Ltd.</b>	L-038/ICL-CGM/XI/2017 1 (Satu) Rig	2 Sumur 235 Mtr 10", 7", 5", PQ, HQ	10-Nov-17	21-Nov-17
12	Tahun 2017-2018 Pemboran Mineral, Kepulauan Bangka & Belitung	Pemboran Timah Jasa Pekerjaan Pemboran Darat (Bor Mekanik) 10.000 Meter Timah TDS PT	7000003161 6 (Enam) Rig	10,000 Meter PQ, HQ, NQ	06 Juli 2017	15 Maret 2018



# Company Experiences

NO	Tahun Nama Paket Pekerjaan *) Lokasi Propinsi	Nama Proyek & Alamat Pengguna Jasa/Pemberi Tugas	No/Tanggal Kontrak atau B.A/Tgl. Serah terima	Total Meter Pemboran dan Ukuran Lubang Hole	Waktu Pelaksanaan Pekerjaan	
					Mulai	Selesai
1	2	3	4	5	6	7
13	Tahun 2011 Pemboran Coal Bed Methane (CBM), Samarinda, Kalimantan Tengah	CBM (Coal Bed Methane) Exploration Pemboran Coring 1 Sumur di Cekungan Kutai PPTMGB	01.SPP/J/91.04/BLM P2K.1 PKL 2011 <b>1 (Satu) Rig</b>	2 Sumur 750 Mtr PQ, HQ, NQ	03-Nov-11	29-Dec-11
14	Tahun 2013 Pemboran Uranium, Pontianak, Kalimantan Barat	Pemboran Inti Sumberdaya Uranium <b>BATAN (Badan Tenaga Atom Nasional)</b>	570/PL0001/PGN/2013	PQ, HQ	18-Jul-13	01-Aug-13
15	Tahun 2012-2013 Pemboran Coking Coal, Juloi, Kalimantan Tengah	Coking Coal Core Drilling <b>BHP Billiton (PT. Juloi Coal)</b>	25629-000-GSC-PTBI- <b>6 (Enam) Rig</b>	Barrel 8" dan Core 6", PQ, HQ	01-Mar-12	28-Dec-13
16	Tahun 2015 Pengeboran Mineral, Kab. Bangka Belitung	<b>Energi Sumber Daya Mineral</b> , ESDM Bandung, Pengeboran Logam Timah Primer di Daerah Parit Tebu, Kec. Gantung, Kab. Banoka Belitung Timur, Prov.	22/SPK/P2K/PSDG/BGD/2 <b>6 (Enam) Rig</b>	PQ, HQ	27-Jul-2015	31-Aug-2015
17	Tahun 2015 Pemboran Mineral Logam, Kab. Solok Selatan, Sumatera Barat	<b>Energi Sumber Daya Mineral</b> , ESDM Bandung, Pengeboran Mineral Logam di Daerah Ulu Suliti-Tanjung Limau Kapeh Kec. Koto Parik Gadang Distrik	23/SPK/P2K/PSDG/BGD/2 <b>5 (Lima) Rig</b>	PQ, HQ	27-Jul-2015	30-Aug-2015
18	Tahun 2013-2014 Pemboran Emas, Pulau Bacan, Halmahera Selatan	Pengadaan Rig Longyear 38 dan Pengeboran Mineral Emas di Pulau Bacan-Halmahera Selatan, <b>PT. Bukit Fajar Mandiri (Kerjasama dengan Pemerintah)</b>	001/D2-LGL/HMR/IV-2013 <b>5 (Lima) Rig</b>	PQ, HQ, NQ	23-Apr-2013	19-Feb-2014
19	Tahun 2011-2013 Pemboran Batubara, Kab. Muara Teweh, Kalimantan Tengah	Pengeboran Batubara <b>PT. Tamtama Perkasa (Barito Group)</b>	085/TP/HK6/X/2011 <b>5 (Lima) Rig</b>	PQ, HQ, NQ	26-Sep-2011	26-Mar-2013
20	Tahun 2010 - 2012	Pengeboran Batubara PT Masindo Artha Resources	01	HQ	27-Dec-2010	30-Nov-2012
21	Tahun 2012 Tanah Grogot, Paser, Kaltim	Pengeboran Batubara Agunori Radja Djaya	052/D2-JD/PRS-CMI/V-2012	HQ	29-Jun-2012	12-Sep-2012
22	Tahun 2011 Desa Muara Kilis, Jambi	Pengeboran Batubara Asia Multi Investama	003/AM/PKS/03/2011	HQ	2-Mar-2011	26-Jul-2011
23	Tahun 2010-2012 Pemboran Batubara, Kab. Musi Banyuasi Prov. Sumatera Selatan	Pengeboran Barubara (Open Hole & Coring) <b>PT. Bumi Semesta Lestari</b> di Kec. Bayunglincir dan Kec. BatanghariLeko, Kab. Musi Banyuasi Prov. Sumatera Selatan	BSL0410	PQ, HQ, NQ	2-Jun-2010	31-Jul-2012
24	Tahun 2010-2012 Pemboran Batubara, Kalimantan Tengah	Pengeboran Bahan Galian Batu Bara <b>PT. Titan Mining Indonesia</b>	024/PKS/TMI-DD/X/10	PQ, HQ, NQ	28-Oct-2010	31-Jan-2012
25	Tahun 2009 Pemboran Batubara, Kab. Paser, Kalimantan Timur	Pengeboran Batubara (Open Hole & Coring) <b>PT. Batubara Selaras Sapta</b> di Tanah Grogot, Kab. Paser, Kalimantan Timur	1	PQ, HQ, NQ	30-Apr-2009	31-Jul-2009

# Company Experiences

NO	Tahun Nama Paket Pekerjaan *) Lokasi Propinsi	Nama Proyek & Alamat Penerima Jasa/Pemberi Tugas	No/Tanggal Kontrak atau B.A/Tgl. Serah terima	Total Meter Pemboran dan Ukuran Lubang Hole	Waktu Pelaksanaan Pekerjaan	
					Mulai	Selesai
1	2	3	4	5	6	7
26	Tahun 2008 Pemboran Batubara, Kab. Muara Lahung, Kalimantan Tengah	Pengeboran Batubara (Open Hole & Coring) <b>PT. Jembayan Muarabaya</b> di Muara Lahung.	JMB/CON-01/DUNGGIO/01/08	PQ, HQ, NQ	15-Feb-2008	14-Aug-2008
27	Tahun 2014  Pemboran Batubara, Kab. Sarolangun, Jambi	Jasa Pekerjaan Pengeboran di Wilayah IUP <b>PT. Bangun Persada Jambi Energi</b> di Daerah Sarolangun, Jambi & Jasa Pekerjaan Pengeboran sesuai kaidah JORC di wilayah IUP <b>PT Mahakarya Abadi</b> Prima Kab.	013/PJ/DIRPLNBB/2014 & 007/BAN-DD/2014	PQ, HQ, NQ	11-Feb-2014	30-May-2014
28	Tahun 2012-2015 Pengeboran Emas	Pekerjaan Pengeboran Diamond untuk Proyek Bakau, <b>PT J Resource Bolaang Monoondow</b>	289	PQ, HQ, NQ	3-Dec-2012	5 Juni 2015
29	Tahun 2009-2011 Pemboran Batubara, Kalimantan Tengah	Pengeboran Batubara (Open Hole & Coring) <b>PT. Daya Bumindo Karunia</b> (Barito Group) di	DBK01	PQ, HQ, NQ	2-Mar-2009	27-Dec-2011
30	Tahun 2010  Pemboran Batubara, Aceh	Pengeboran Batubara (Open Hole & Coring) <b>PT. Bhoruka Power</b> di Subulussalam, Aceh	BP01	PQ, HQ, NQ	8-Jan-2010	7-Mar-2010
31	Tahun 2007-2008 Pemboran Batubara & Water Well, Kalimantan Tengah	Drilling Contract Works Services at <b>PT Arutmin</b> Indonesia	BPN/07/C01	PQ, HQ, NQ	22-May-2007	2-Feb-2008
32	Tahun 2007-2008 Pemboran Batubara, Kab. Murung Raya, Kalimantan Tengah	Pemboran Eksplorasi Batubara wilayah PKP2B <b>PT Marunda Graha Mineral</b> Kecamatan Laung Tuhup Kabupaten Murung Raya	062/PJ-BOR/MGM-DD/IX-07	PQ, HQ, NQ	25-Sep-2007	3-Mar-2008
33	Tahun 2006-2008 Pemboran Coking Coal & Water Well, Kalimantan Tengah	Drilling Contract between <b>BHP</b> <b>Billiton - PT Kalteng Coal</b> and PT Dunggio Drilling (Open Hole & Coring)	0665-C-0001	Barrel 8" dan Core 6", PQ, HQ	3-Aug-2006	7-Mar-2008
34	Tahun 2005 - 2007 Pemboran Coking Coal & Water Well, Lahal, Kalimantan Tengah	Drilling Contract between <b>BHP</b> <b>Billiton - PT Lahai Coal</b> and PT Dunggio Drilling (Open Hole & Coring)	M-01.05.01.07.04-D-7083LIM	Barrel 8" dan Core 6", PQ, HQ	28-Jul-2005	21-Feb-2007
35	Tahun 2005-2006 Pemboran Coking Coal & Water Well, Kalimantan Tengah	Drilling Contract between <b>BHP</b> <b>Billiton - PT Maruwai Coal</b> and PT Dunggio Drilling (Open Hole & Coring)	PTMC/DRILL001/03/05	Barrel 8" dan Coring 6", PQ, HQ	6-Mar-2005	17-Jan-2006



# DD DRILLING PROJECTS



**MEDCO ENERGY  
OIL DRILLING**



**ADARO METCOAL  
MOVING RIG BY CHOPPER**



**EPHINDO  
CBM DRILLING**



**ADARO METCOAL  
COAL DRILLING**



**LEMIGAS  
CBM DRILLING**



**BHP BILLITON  
ACCESS PREPARATION**



**BHP BILLITON  
REHABILITATION**



**BFM - KOREAN GOVERNMENT  
GOLD DRILLING**



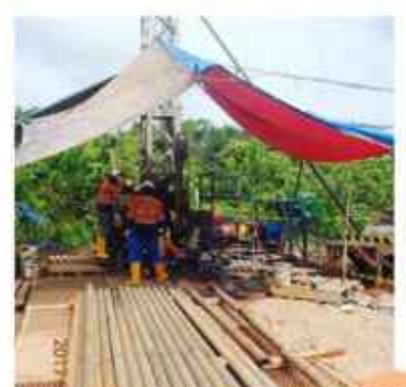
**TIMAH TBK.  
TIN DRILLING**



**INDON CBM PTY LTD.  
CBM DRILLING**



**BHP BILLITON  
MOVING RIG BY CHOPPER**



**ARUTMIN INDONESIA  
COAL DRILLING**

**More updates  
please to keep  
an eye on our  
social media  
@dunggiodrilling**



**Drilling Contractor  
Services**

**COAL - MINERAL - OIL & GAS - GEOTHERMAL - WATERWELL - BLASTHOLE DRILLING**

**PT DUNGGIO DRILLING, JL. Industri Selatan 6 Blok GG 9A, Jababeka II, Industrial Estate, Cikarang Selatan, Bekasi 17550  
Ph. 021 - 89841343, Fax 021 - 89841342, email: info@dunggiodrilling.com, Website: www.dunggiodrilling.com**